

RMBS Arrears Statistics

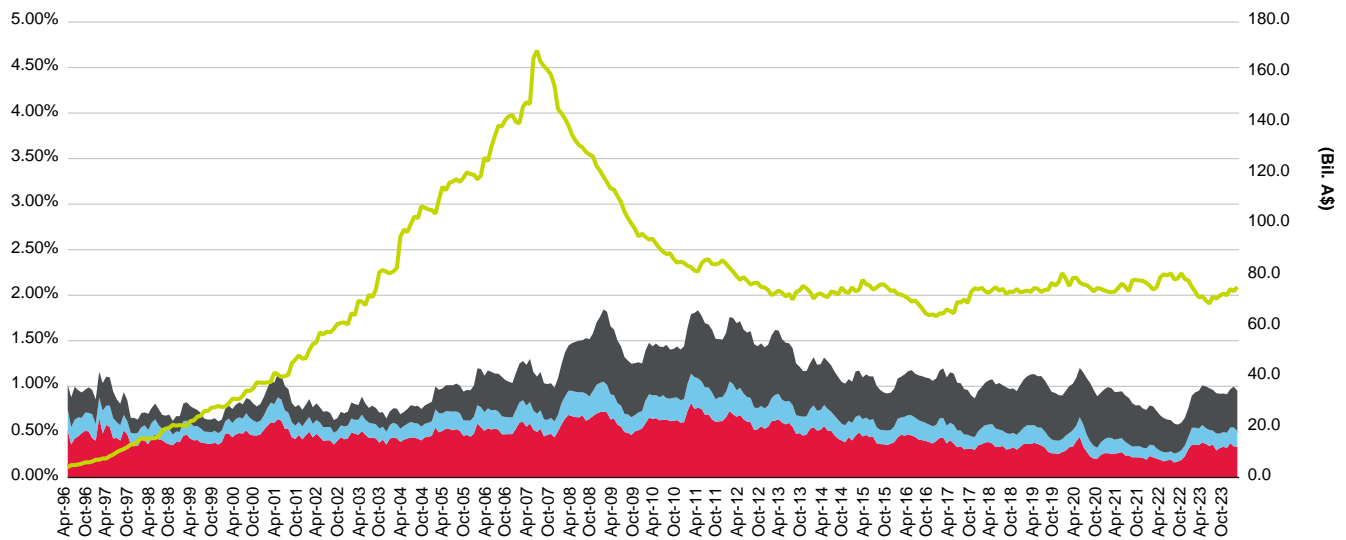
**Australia (Excluding
Non-Capital Market Issuance)**

As of February 29, 2024

This report does not constitute a rating action

Arrears Statistics - Prime

Australia Prime S&P Global Ratings Mortgage Performance Index (SPIN)



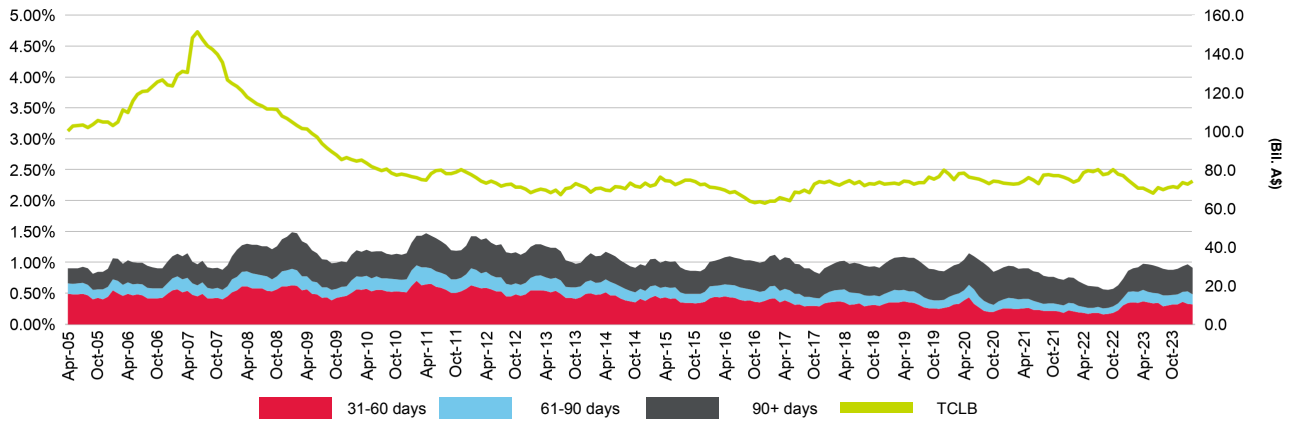
■ 31-60 days
 ■ 61-90 days
 ■ 90+ days
 — TCLB(Total current loan balance)

(%)	Mar-23	Apr-23	May-23	Jun-23	Jul-23	Aug-23	Sep-23	Oct-23	Nov-23	Dec-23	Jan-24	Feb-24
31-60 days	0.36	0.38	0.37	0.35	0.36	0.30	0.32	0.34	0.32	0.38	0.34	0.34
61-90 days	0.18	0.19	0.17	0.18	0.15	0.19	0.16	0.16	0.17	0.17	0.21	0.17
90+ days	0.42	0.43	0.46	0.46	0.45	0.44	0.44	0.42	0.42	0.42	0.45	0.44
Prime SPIN	0.95	1.01	1.00	0.98	0.96	0.92	0.92	0.92	0.91	0.97	1.00	0.95
TCLB (Bil. A\$)	71.15	71.64	69.90	68.73	71.42	70.69	71.83	72.61	72.02	74.44	73.58	75.25

Copyright © 2024 Standard & Poor's Financial Services LLC. All rights reserved. Reproduction in whole or in part prohibited except by permission. RMBS Arrears Statistics Australia is subject to the full disclaimer on the inside back cover.

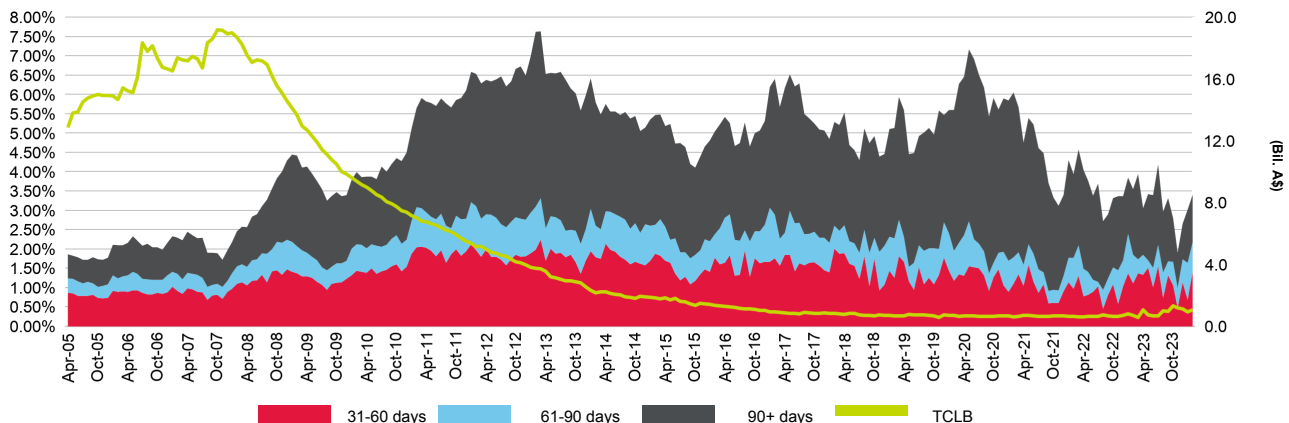
Arrears Statistics - Prime

Arrears Reported on a Full Doc Basis



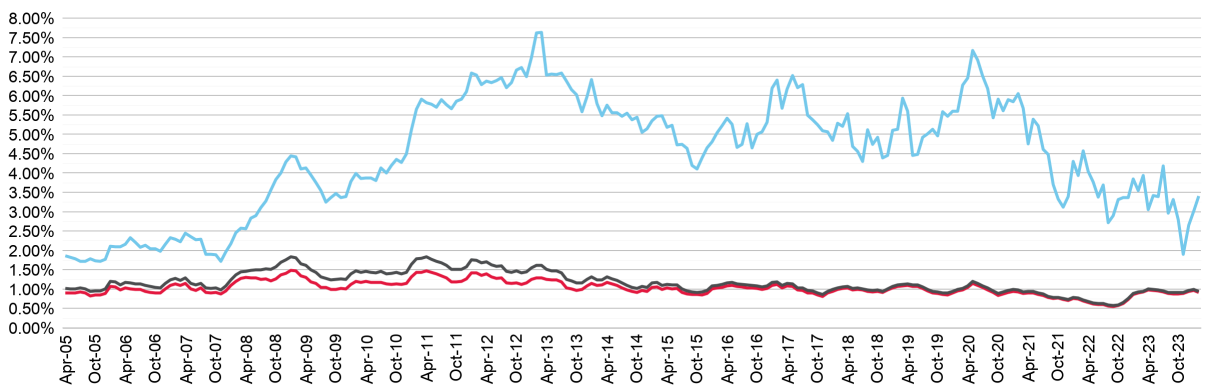
(%)	Mar-23	Apr-23	May-23	Jun-23	Jul-23	Aug-23	Sep-23	Oct-23	Nov-23	Dec-23	Jan-24	Feb-24
31-60 days	0.35	0.37	0.36	0.34	0.35	0.29	0.31	0.32	0.32	0.36	0.33	0.32
61-90 days	0.18	0.19	0.17	0.17	0.15	0.18	0.16	0.15	0.16	0.17	0.20	0.16
90+ days	0.40	0.42	0.44	0.44	0.43	0.43	0.42	0.41	0.41	0.41	0.44	0.43
Full Doc SPIN	0.93	0.98	0.97	0.95	0.93	0.90	0.89	0.89	0.90	0.94	0.97	0.92
TCLB (Bil. A\$)	70.57	70.59	69.17	68.04	70.76	69.69	70.85	71.28	70.83	73.31	72.63	74.18

Arrears Reported on a LoDoc Basis



(%)	Mar-23	Apr-23	May-23	Jun-23	Jul-23	Aug-23	Sep-23	Oct-23	Nov-23	Dec-23	Jan-24	Feb-24
31-60 days	1.37	1.34	1.51	1.01	1.56	0.73	1.32	1.06	0.48	1.14	0.68	1.41
61-90 days	0.37	0.51	0.20	0.51	0.55	0.67	0.37	0.62	0.52	0.59	0.96	0.77
90+ days	2.21	1.21	1.72	1.88	2.08	1.57	1.63	1.13	0.91	0.92	1.38	1.22
Lo Doc SPIN	3.94	3.06	3.42	3.40	4.19	2.97	3.32	2.81	1.91	2.66	3.02	3.40
TCLB (Bil. A\$)	0.58	1.05	0.73	0.69	0.66	0.99	0.98	1.33	1.18	1.13	0.94	1.07

Document Type Comparison

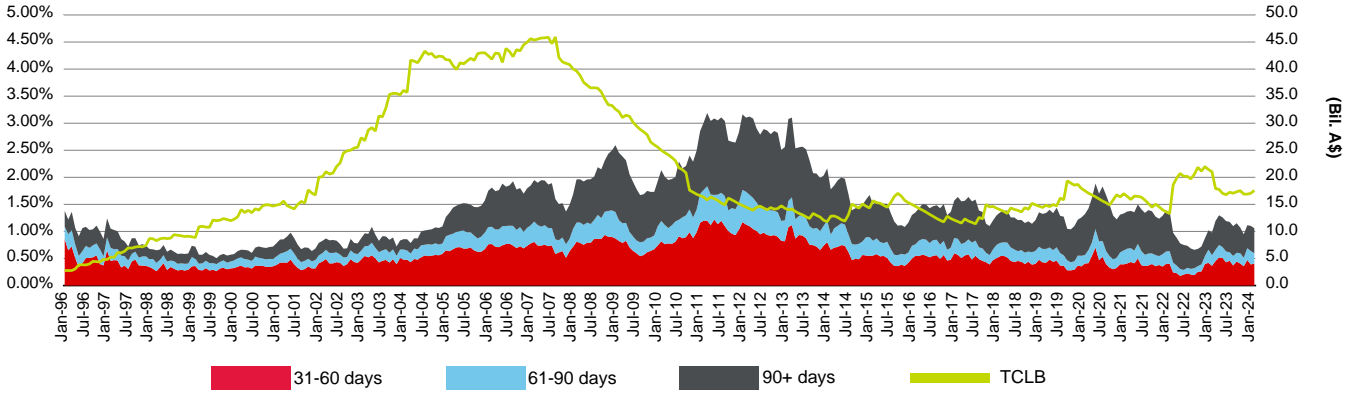


(%)	Mar-23	Apr-23	May-23	Jun-23	Jul-23	Aug-23	Sep-23	Oct-23	Nov-23	Dec-23	Jan-24	Feb-24
Full Doc SPIN	0.93	0.98	0.97	0.95	0.93	0.90	0.89	0.89	0.90	0.94	0.97	0.92
Lo Doc SPIN	3.94	3.06	3.42	3.40	4.19	2.97	3.32	2.81	1.91	2.66	3.02	3.40
Prime SPIN	0.95	1.01	1.00	0.98	0.96	0.92	0.92	0.92	0.91	0.97	1.00	0.95
Full Doc % Prime TCLB	99.18	98.54	98.95	99.00	99.08	98.60	98.63	98.17	98.36	98.48	98.72	98.57
Lo Doc % Prime TCLB	0.82	1.46	1.05	1.00	0.92	1.40	1.37	1.83	1.64	1.52	1.28	1.43

Copyright © 2024 Standard & Poor's Financial Services LLC. All rights reserved. Reproduction in whole or in part prohibited except by permission. RMBS Arrears Statistics Australia is subject to the full disclaimer on the inside back cover.

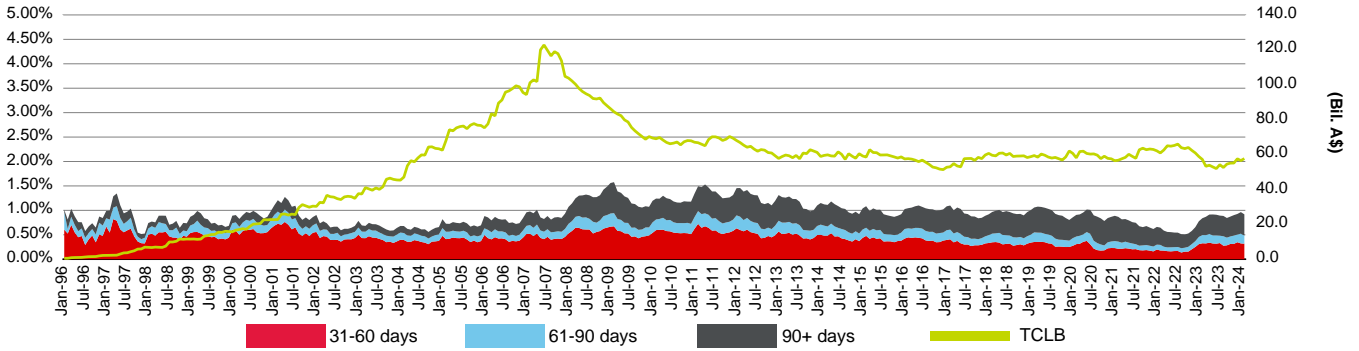
Arrears Statistics - Prime

Arrears Reported on a Missed Payment Basis



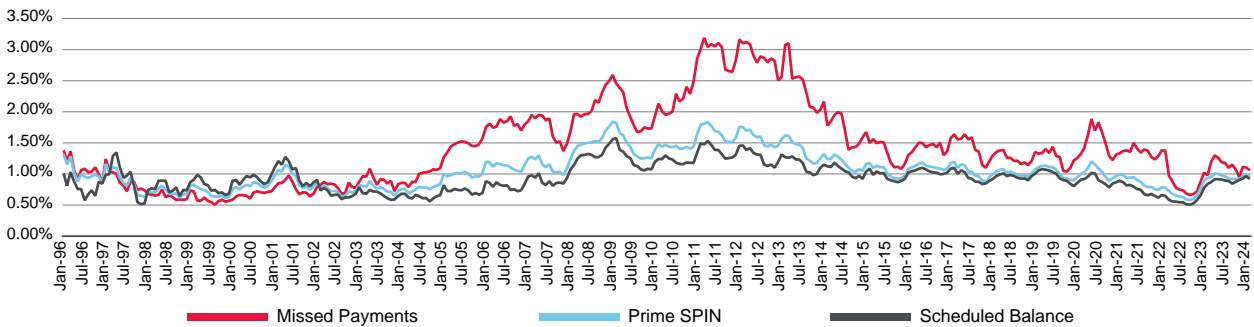
(%)	Mar-23	Apr-23	May-23	Jun-23	Jul-23	Aug-23	Sep-23	Oct-23	Nov-23	Dec-23	Jan-24	Feb-24
31-60 days	0.45	0.52	0.51	0.43	0.46	0.37	0.44	0.41	0.36	0.47	0.39	0.41
61-90 days	0.21	0.23	0.20	0.20	0.16	0.18	0.16	0.19	0.16	0.22	0.25	0.19
90+ days	0.53	0.55	0.55	0.56	0.56	0.55	0.55	0.47	0.43	0.42	0.46	0.46
Total	1.19	1.30	1.26	1.19	1.18	1.10	1.15	1.07	0.95	1.11	1.10	1.06
TCLB (Bil. A\$)	17.91	17.77	17.03	16.79	17.23	17.06	17.32	17.54	16.90	16.89	17.05	17.58

Arrears Reported on a Scheduled Balance Basis



(%)	Mar-23	Apr-23	May-23	Jun-23	Jul-23	Aug-23	Sep-23	Oct-23	Nov-23	Dec-23	Jan-24	Feb-24
31-60 days	0.32	0.34	0.32	0.32	0.33	0.28	0.28	0.31	0.31	0.35	0.32	0.32
61-90 days	0.17	0.18	0.17	0.17	0.15	0.19	0.16	0.15	0.17	0.16	0.20	0.17
90+ days	0.38	0.40	0.43	0.42	0.41	0.42	0.40	0.41	0.42	0.42	0.44	0.43
Total	0.87	0.91	0.92	0.91	0.89	0.89	0.84	0.87	0.90	0.93	0.96	0.92
TCLB (Bil. A\$)	53.25	53.87	52.87	51.94	54.19	52.54	54.51	55.07	55.12	57.55	56.53	57.67

Arrears Calculation Method Comparison

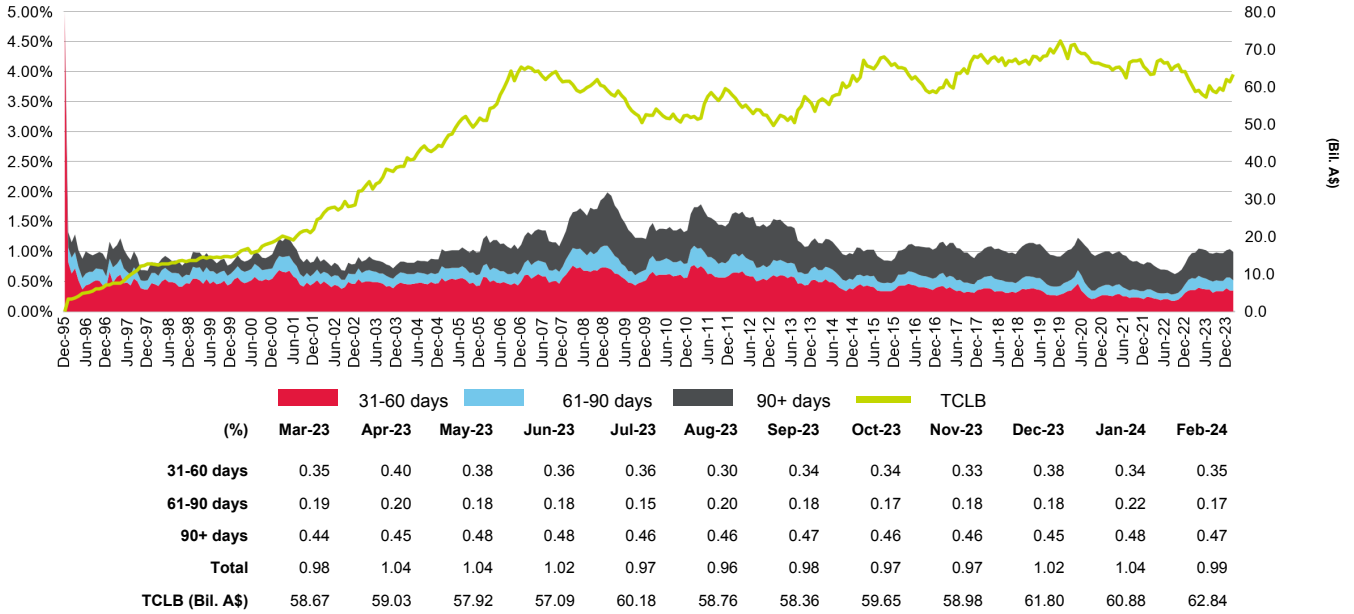


(%)	Mar-23	Apr-23	May-23	Jun-23	Jul-23	Aug-23	Sep-23	Oct-23	Nov-23	Dec-23	Jan-24	Feb-24
Missed Payments	1.19	1.30	1.26	1.19	1.18	1.10	1.15	1.07	0.95	1.11	1.10	1.06
Scheduled Balance	0.87	0.91	0.92	0.91	0.89	0.89	0.84	0.87	0.90	0.93	0.96	0.92
PrimeSPIN	0.95	1.01	1.00	0.98	0.96	0.92	0.92	0.92	0.91	0.97	1.00	0.95

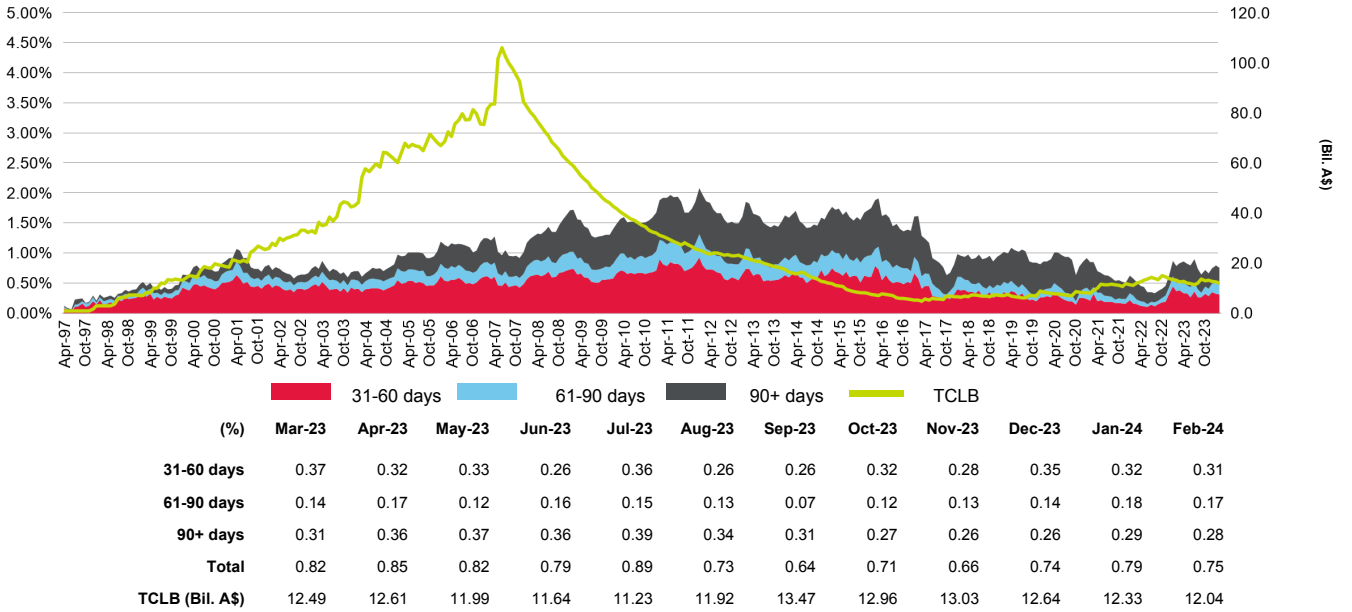
Copyright © 2024 Standard & Poor's Financial Services LLC. All rights reserved. Reproduction in whole or in part prohibited except by permission. RMBS Arrears Statistics Australia is subject to the full disclaimer on the inside back cover.

Arrears Statistics - Prime

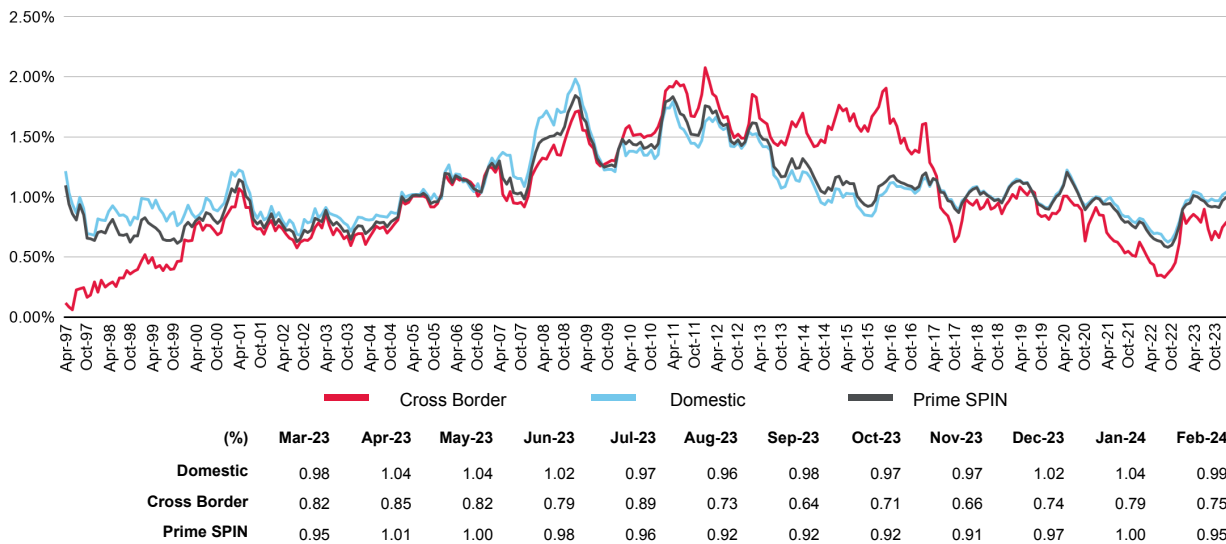
Arrears Domestic Issues



Arrears Cross Border Issues

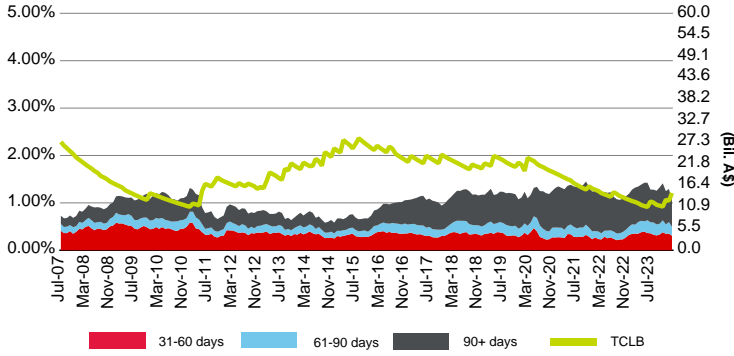


Market Comparison



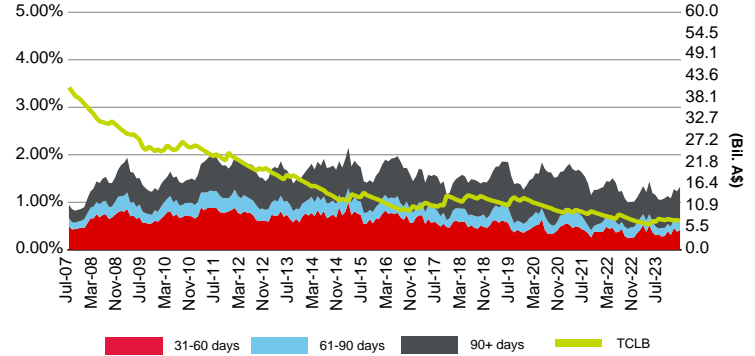
Arrears Statistics - Prime

Major Banks



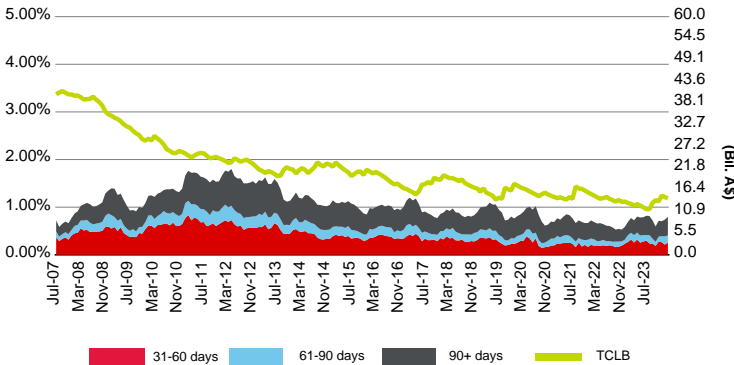
(%)	Sep-23	Oct-23	Nov-23	Dec-23	Jan-24	Feb-24
31-60 days	0.31	0.33	0.38	0.35	0.35	0.31
61-90 days	0.23	0.23	0.25	0.20	0.24	0.19
90+ days	0.71	0.77	0.78	0.70	0.70	0.57
Major Banks SPIN	1.26	1.33	1.41	1.25	1.29	1.07
TCLB (Bil. A\$)	11.51	11.29	11.05	12.77	12.55	14.50

Regional Banks



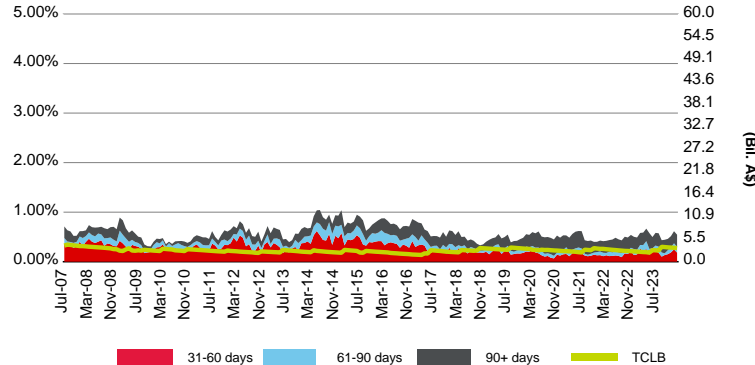
(%)	Sep-23	Oct-23	Nov-23	Dec-23	Jan-24	Feb-24
31-60 days	0.29	0.39	0.31	0.46	0.38	0.41
61-90 days	0.17	0.15	0.17	0.20	0.23	0.23
90+ days	0.62	0.59	0.60	0.62	0.61	0.68
Regional Banks SPIN	1.09	1.13	1.08	1.28	1.23	1.33
TCLB (Bil. A\$)	7.47	7.76	7.60	7.42	7.49	7.34

Other Banks



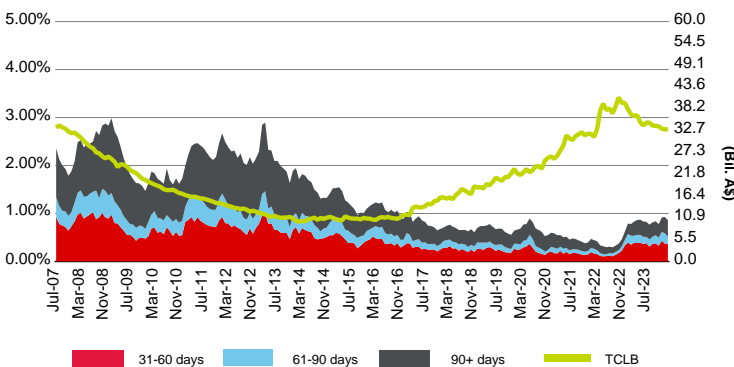
(%)	Sep-23	Oct-23	Nov-23	Dec-23	Jan-24	Feb-24
31-60 days	0.23	0.19	0.28	0.26	0.21	0.26
61-90 days	0.11	0.08	0.10	0.13	0.17	0.15
90+ days	0.38	0.32	0.33	0.31	0.35	0.39
Other Banks SPIN	0.72	0.60	0.71	0.71	0.74	0.80
TCLB (Bil. A\$)	13.09	13.76	13.46	14.92	14.53	14.27

Non-Bank Financial Institutions



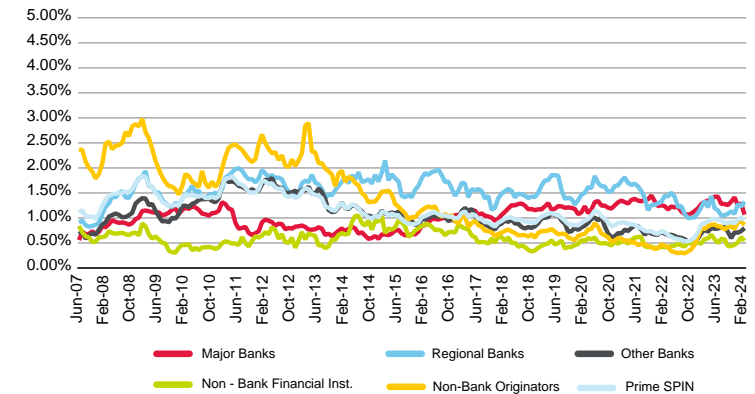
(%)	Sep-23	Oct-23	Nov-23	Dec-23	Jan-24	Feb-24
31-60 days	0.10	0.14	0.15	0.19	0.25	0.18
61-90 days	0.08	0.04	0.08	0.11	0.12	0.12
90+ days	0.25	0.27	0.23	0.22	0.24	0.25
Non-Bank Financial Institutions SPIN	0.43	0.44	0.46	0.52	0.62	0.54
TCLB (Bil. A\$)	3.60	3.54	3.47	3.42	3.36	3.30

Non-Bank Originators



(%)	Sep-23	Oct-23	Nov-23	Dec-23	Jan-24	Feb-24
31-60 days	0.36	0.38	0.33	0.43	0.37	0.36
61-90 days	0.15	0.17	0.17	0.18	0.22	0.16
90+ days	0.30	0.29	0.28	0.30	0.34	0.34
Non-Bank Originators SPIN	0.81	0.84	0.78	0.92	0.93	0.86
TCLB (Bil. A\$)	33.99	33.92	33.80	33.22	33.00	33.14

Financial Institutions Comparison

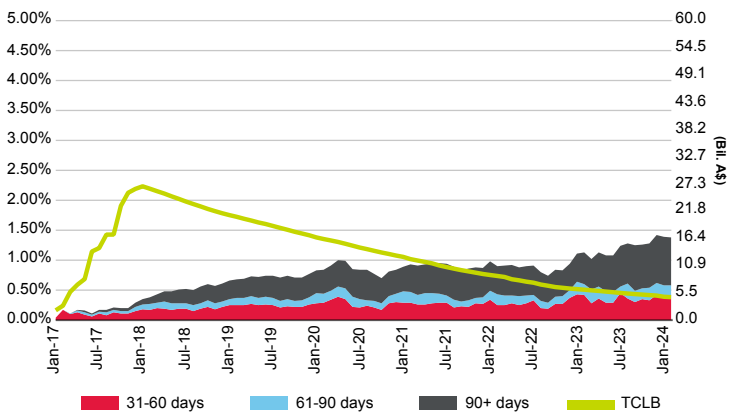


(%)	Sep-23	Oct-23	Nov-23	Dec-23	Jan-24	Feb-24
Major Banks	1.26	1.33	1.41	1.25	1.29	1.07
Regional Banks	1.09	1.13	1.08	1.28	1.23	1.33
Other Banks	0.72	0.60	0.71	0.71	0.74	0.80
Non-Bank Financial Institutions	0.43	0.44	0.46	0.52	0.62	0.54
Non-Bank Originators	0.81	0.84	0.78	0.92	0.93	0.86
Prime SPIN	0.92	0.92	0.91	0.97	1.00	0.95

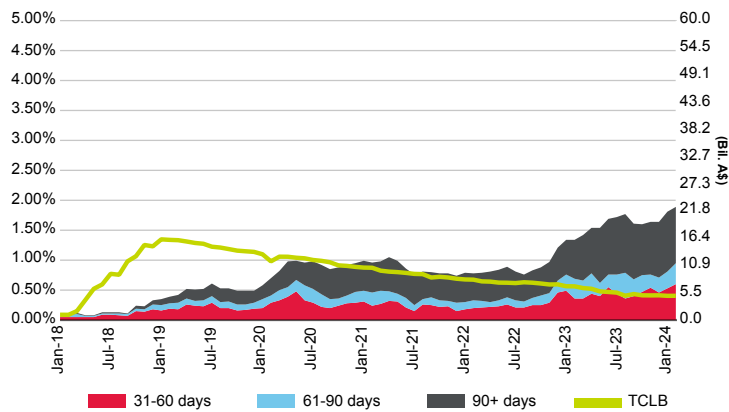
Arrears Statistics - Prime

By Year Of Issuance

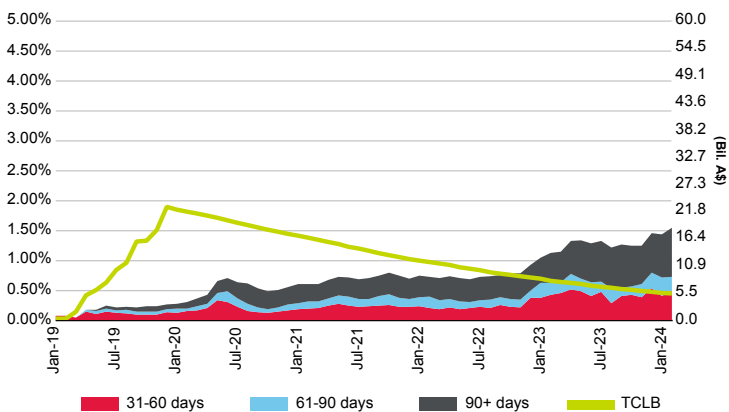
2017



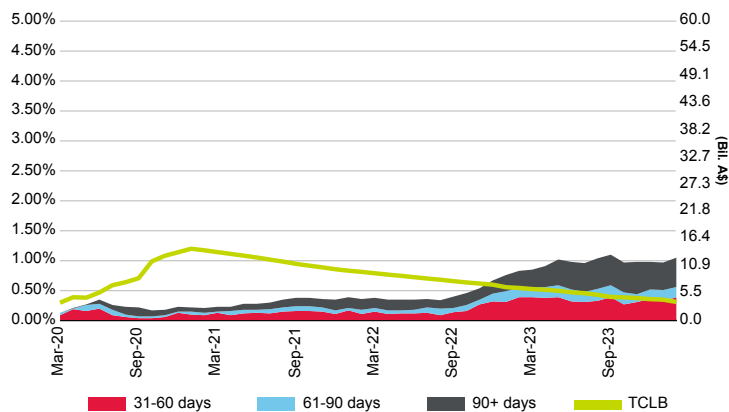
2018



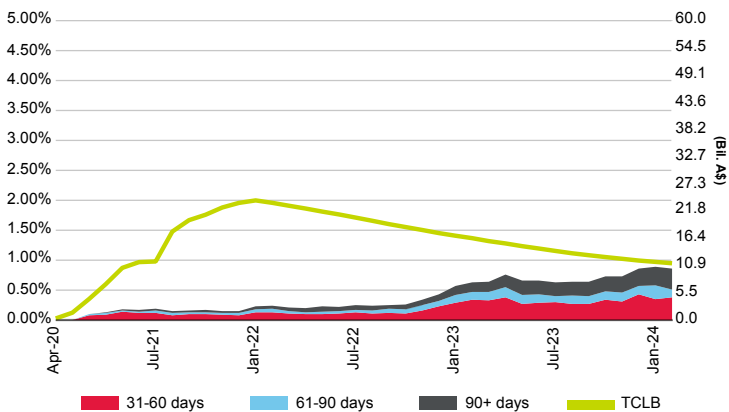
2019



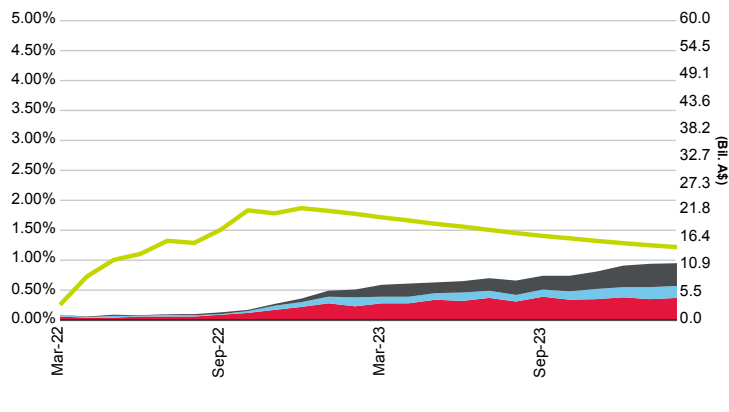
2020



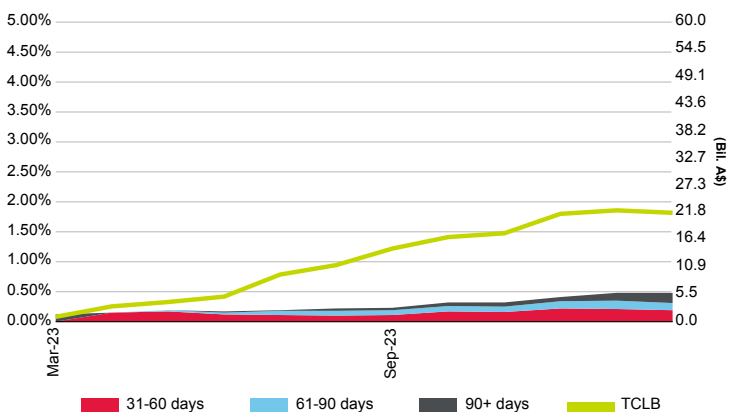
2021



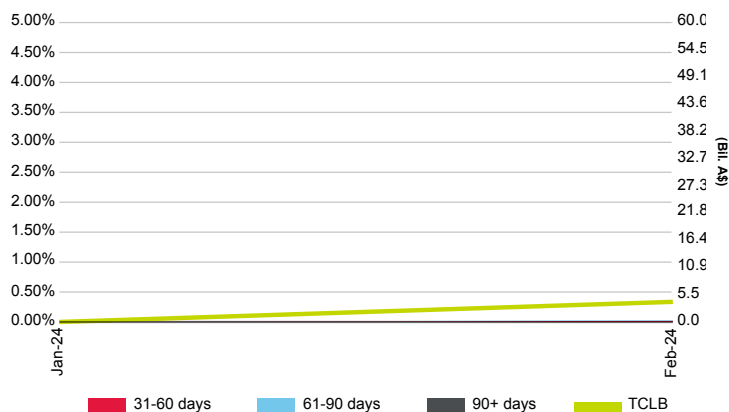
2022



2023



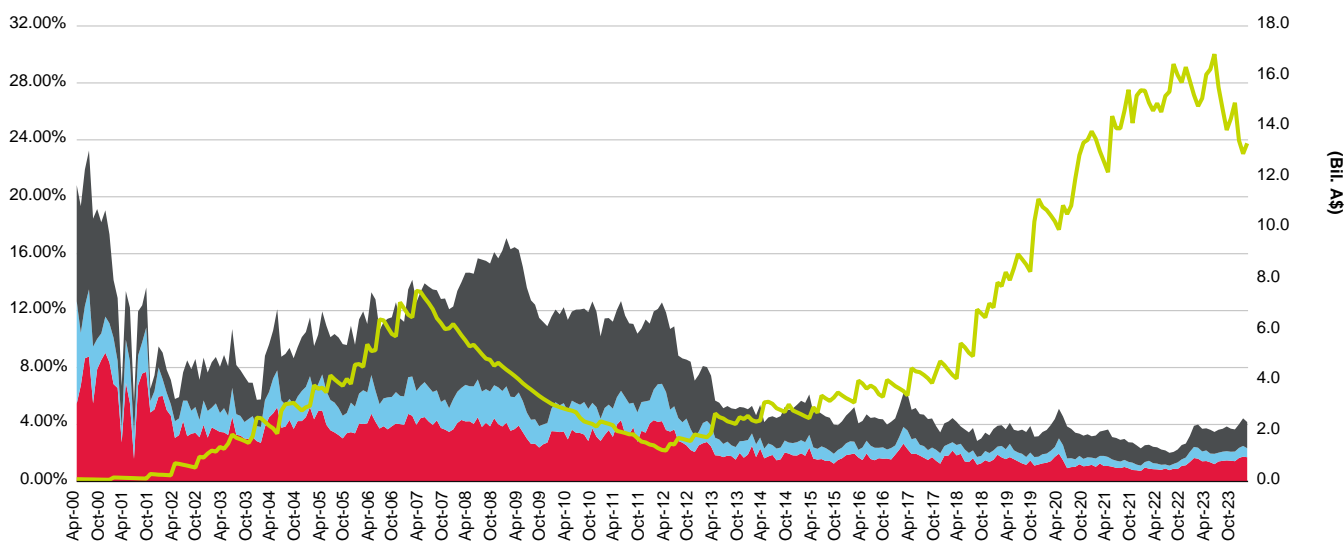
2024



Copyright © 2024 Standard & Poor's Financial Services LLC. All rights reserved. Reproduction in whole or in part prohibited except by permission. RMBS Arrears Statistics Australia is subject to the full disclaimer on the inside back cover.

Arrears Statistics - Non-Conforming

Australia Non-Conforming S&P Global Ratings Mortgage Performance Index (SPIN)



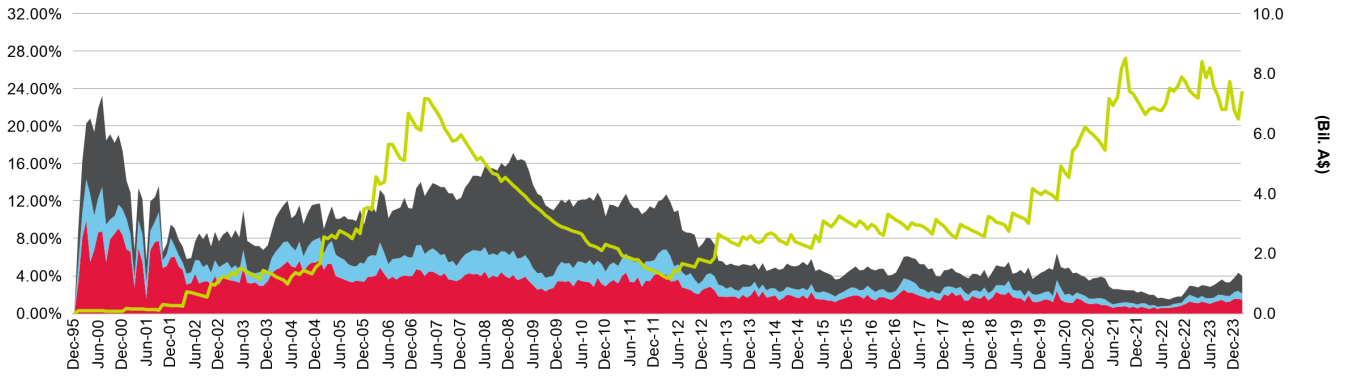
■ 31-60 days
 ■ 61-90 days
 ■ 90+ days
 — TCLB(Total current loan balance)

(%)	Mar-23	Apr-23	May-23	Jun-23	Jul-23	Aug-23	Sep-23	Oct-23	Nov-23	Dec-23	Jan-24	Feb-24
31-60 days	1.41	1.43	1.34	1.21	1.40	1.44	1.47	1.45	1.42	1.65	1.74	1.70
61-90 days	0.69	0.74	0.62	0.73	0.62	0.65	0.65	0.63	0.68	0.71	0.75	0.63
90+ days	1.59	1.56	1.67	1.53	1.61	1.61	1.73	1.62	1.56	1.66	1.93	1.84
Non-Conforming SPIN	3.70	3.73	3.63	3.47	3.63	3.70	3.86	3.70	3.65	4.02	4.43	4.17
TCLB (Bil. A\$)	15.14	16.08	16.29	16.89	15.58	14.71	13.89	14.34	14.97	13.47	12.95	13.36

Copyright © 2024 Standard & Poor's Financial Services LLC. All rights reserved. Reproduction in whole or in part prohibited except by permission. RMBS Arrears Statistics Australia is subject to the full disclaimer on the inside back cover.

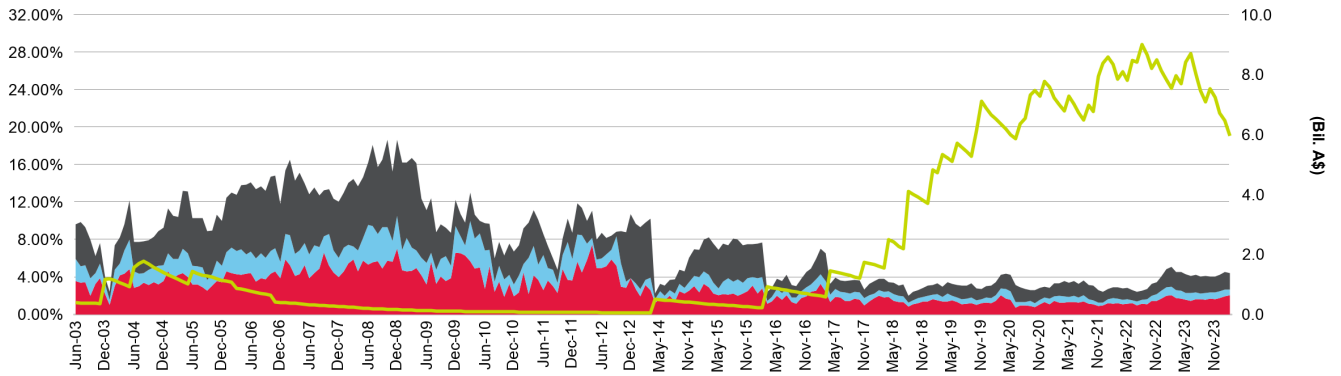
Arrears Statistics - Non-Conforming

Arrears Domestic Issues



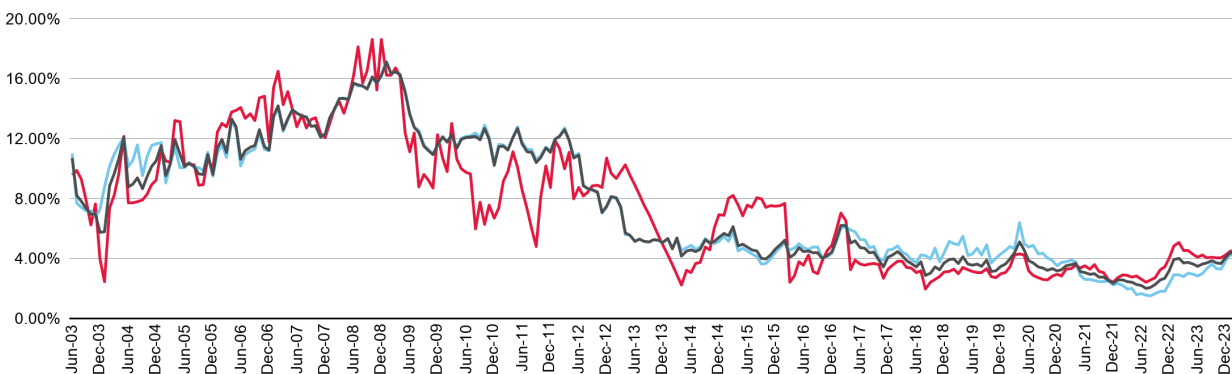
(%)	Mar-23	Apr-23	May-23	Jun-23	Jul-23	Aug-23	Sep-23	Oct-23	Nov-23	Dec-23	Jan-24	Feb-24
31-60 days	1.06	1.23	1.10	1.01	1.16	1.28	1.41	1.21	1.24	1.55	1.57	1.45
61-90 days	0.54	0.63	0.54	0.60	0.53	0.69	0.57	0.63	0.64	0.72	0.80	0.65
90+ days	1.19	1.15	1.31	1.22	1.29	1.36	1.66	1.49	1.41	1.53	1.98	1.87
Total	2.78	3.02	2.94	2.84	2.99	3.33	3.63	3.33	3.29	3.80	4.35	3.98
TCLB (Bil. A\$)	7.18	8.39	7.87	8.19	7.55	7.25	6.81	6.81	7.73	6.77	6.48	7.41

Arrears Cross Border Issues



(%)	Mar-23	Apr-23	May-23	Jun-23	Jul-23	Aug-23	Sep-23	Oct-23	Nov-23	Dec-23	Jan-24	Feb-24
31-60 days	1.73	1.65	1.56	1.41	1.63	1.61	1.54	1.67	1.61	1.75	1.91	2.01
61-90 days	0.84	0.86	0.69	0.84	0.70	0.60	0.73	0.64	0.72	0.69	0.71	0.60
90+ days	1.95	2.00	2.01	1.83	1.91	1.84	1.80	1.73	1.71	1.80	1.89	1.80
Total	4.52	4.51	4.26	4.07	4.23	4.05	4.07	4.05	4.04	4.24	4.51	4.41
TCLB (Bil. A\$)	7.96	7.70	8.42	8.70	8.02	7.46	7.08	7.53	7.23	6.71	6.47	5.95

Market Comparison

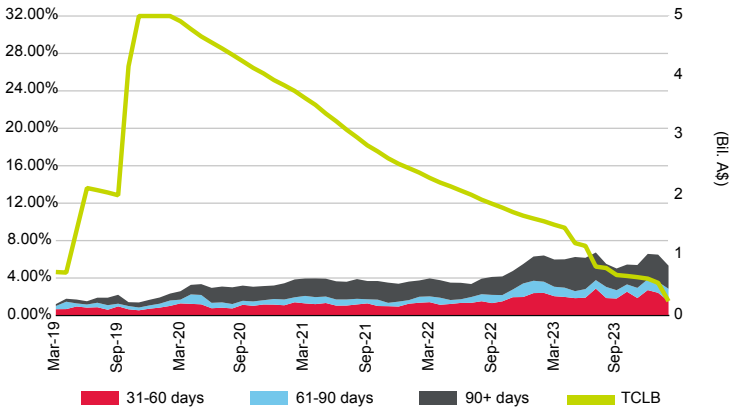


(%)	Mar-23	Apr-23	May-23	Jun-23	Jul-23	Aug-23	Sep-23	Oct-23	Nov-23	Dec-23	Jan-24	Feb-24
Domestic	2.78	3.02	2.94	2.84	2.99	3.33	3.63	3.33	3.29	3.80	4.35	3.98
Cross Border	4.52	4.51	4.26	4.07	4.23	4.05	4.07	4.05	4.04	4.24	4.51	4.41
Non-Conforming SPIN	3.70	3.73	3.63	3.47	3.63	3.70	3.86	3.70	3.65	4.02	4.43	4.17

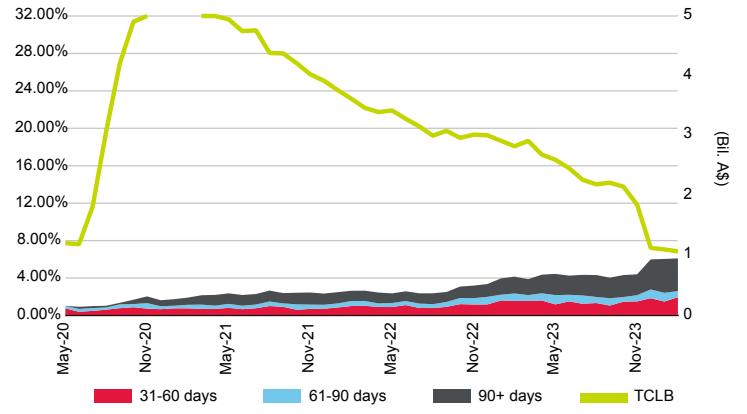
Arrears Statistics - Non-Conforming

By Year Of Issuance

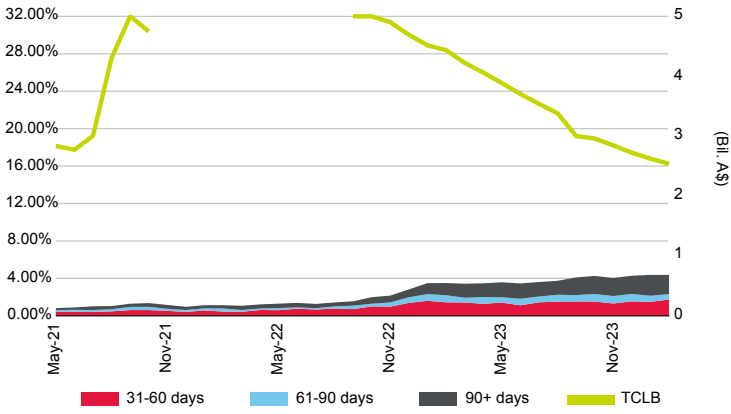
2019



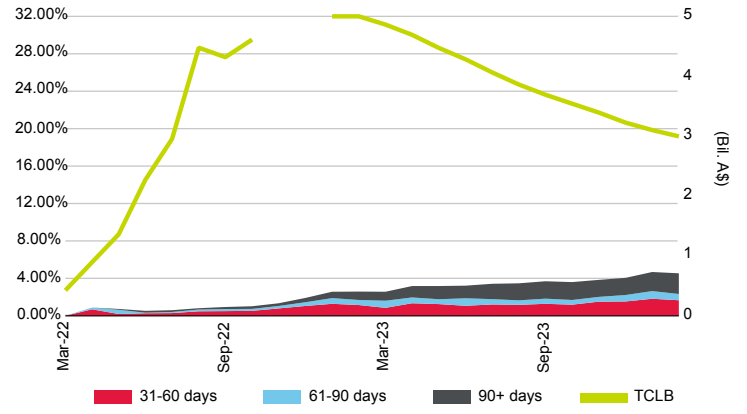
2020



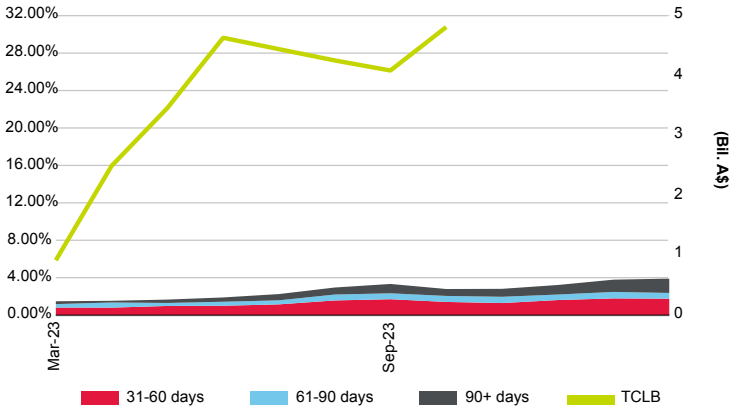
2021



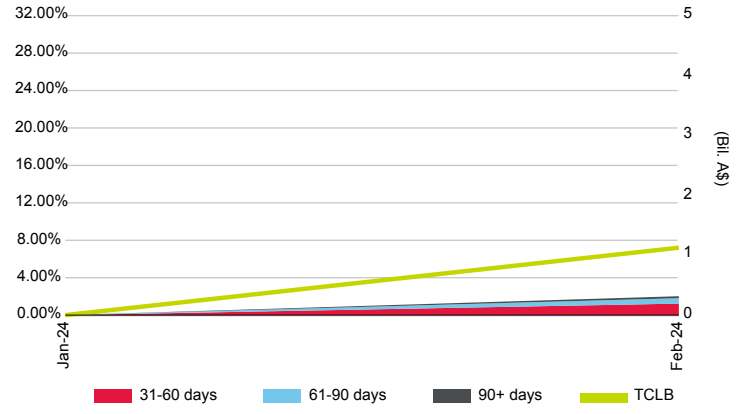
2022



2023



2024



Under S&P Global Ratings' policies, only a Rating Committee can determine a Credit Rating Action (including a Credit Rating change, affirmation or withdrawal, Rating Outlook change, or CreditWatch action). This commentary and its subject matter have not been the subject of a Rating Committee action and should not be interpreted as a change to, or affirmation of, a Credit Rating or Rating Outlook.

No content (including ratings, credit-related analyses and data, valuations, model, software or other application or output therefrom) or any part thereof (Content) may be modified, reverse engineered, reproduced or distributed in any form by any means, or stored in a database or retrieval system, without the prior written permission of Standard & Poor's Financial Services LLC or its affiliates (collectively, S&P). The Content shall not be used for any unlawful or unauthorized purposes. S&P and any third-party providers, as well as their directors, officers, shareholders, employees or agents (collectively S&P Parties) do not guarantee the accuracy, completeness, timeliness or availability of the Content. S&P Parties are not responsible for any errors or omissions (negligent or otherwise), regardless of the cause, for the results obtained from the use of the Content, or for the security or maintenance of any data input by the user. The Content is provided on an "as is" basis. S&P PARTIES DISCLAIM ANY AND ALL EXPRESS OR IMPLIED WARRANTIES, INCLUDING, BUT NOT LIMITED TO, ANY WARRANTIES OF MERCHANTABILITY OR FITNESS FOR A PARTICULAR PURPOSE OR USE, FREEDOM FROM BUGS, SOFTWARE ERRORS OR DEFECTS, THAT THE CONTENT'S FUNCTIONING WILL BE UNINTERRUPTED OR THAT THE CONTENT WILL OPERATE WITH ANY SOFTWARE OR HARDWARE CONFIGURATION. In no event shall S&P Parties be liable to any party for any direct, indirect, incidental, exemplary, compensatory, punitive, special or consequential damages, costs, expenses, legal fees, or losses (including, without limitation, lost income or lost profits and opportunity costs or losses caused by negligence) in connection with any use of the Content even if advised of the possibility of such damages.

Credit-related and other analyses, including ratings, and statements in the Content are statements of opinion as of the date they are expressed and not statements of fact. S&P's opinions, analyses and rating acknowledgment decisions (described below) are not recommendations to purchase, hold, or sell any securities or to make any investment decisions, and do not address the suitability of any security. S&P assumes no obligation to update the Content following publication in any form or format. The Content should not be relied on and is not a substitute for the skill, judgment and experience of the user, its management, employees, advisors and/or clients when making investment and other business decisions. S&P does not act as a fiduciary or an investment advisor except where registered as such. While S&P has obtained information from sources it believes to be reliable, S&P does not perform an audit and undertakes no duty of due diligence or independent verification of any information it receives.

To the extent that regulatory authorities allow a rating agency to acknowledge in one jurisdiction a rating issued in another jurisdiction for certain regulatory purposes, S&P reserves the right to assign, withdraw or suspend such acknowledgement at any time and in its sole discretion. S&P Parties disclaim any duty whatsoever arising out of the assignment, withdrawal or suspension of an acknowledgment as well as any liability for any damage alleged to have been suffered on account thereof.

S&P keeps certain activities of its business units separate from each other in order to preserve the independence and objectivity of their respective activities. As a result, certain business units of S&P may have information that is not available to other S&P business units. S&P has established policies and procedures to maintain the confidentiality of certain non-public information received in connection with each analytical process.

S&P may receive compensation for its ratings and certain analyses, normally from issuers or underwriters of securities or from obligors. S&P reserves the right to disseminate its opinions and analyses. S&P's public ratings and analyses are made available on its Web sites, www.standardandpoors.com (free of charge), and www.ratingsdirect.com and may be distributed through other means, including via S&P publications and third-party redistributors. Additional information about our ratings fees is available at www.standardandpoors.com/usratingsfees.

Permissions: To reprint, translate, or quote S&P Global Ratings' publications, contact: Client Services, 120 Collins Street, Melbourne, Vic 3000 Australia, (61) 1300-792-553.

This report and the ratings contained within it are based on published information as of February 29, 2024. Subsequent information may result in the assignment of ratings that differ from the ratings published here. Please call Standard & Poor's Client Services at (61) 1300-792-553 for the most recent rating assigned.

For Australian Users— S&P Global Ratings Australia Pty Ltd. holds Australian financial services licence number 337565 under the Corporations Act 2001. S&P Global Ratings' credit ratings and related research are not intended for and must not be distributed to any person in Australia other than a wholesale client (as defined in Chapter 7 of the Corporations Act).

S&P Global Ratings 17g-7 Disclosure Report

SEC Rule 17g-7 requires an NRSRO, for any report accompanying a credit rating relating to an asset-backed security as defined in the Rule, to include a description of the representations, warranties and enforcement mechanisms available to investors and a description of how they differ from the representations, warranties and enforcement mechanisms in issuances of similar securities. The Rule applies to in-scope securities initially rated (including preliminary ratings) on or after Sept. 26, 2011.

Copyright © 2024 by Standard & Poor's Financial Services LLC. All rights reserved.
STANDARD & POOR'S, S&P and RATINGSDIRECT are registered trademarks of Standard & Poor's Financial Services LLC.

Reproduction in whole or in part prohibited except by permission.

